

whiz

Commercial Robot Vacuum



Canon

Whiz
by **SoftBank**
Robotics

CUTTING EDGE AI FOR ELEVATED HEALTH & SAFETY

Changing Professional Cleaning with Breakthrough AI Navigation Technology



INNOVATION

Leverage robotics and automation to help drive brand value, differentiate from the competition, and move your business forward.



RESILIENCE

Use Whiz Connect to help reinvent and monitor your physical environment with adaptable technology and real-time data.



EXPERIENCE

Having a Whiz on your team can help to meet and exceed occupant expectations to attract customers and talent, improve productivity, and foster revenue growth in your ecosystem.



CLEANLINESS

Whiz aids in increased cleaning frequency, coverage, efficacy, and HEPA filtration so that you can live healthier in your day-to-day spaces.

EASY TO USE

User friendly, Whiz works right out of the box, so teams can start benefiting right away.

COVER MORE GROUND

Whiz learns all the routes your team needs—and cleans around 4,000 sq.ft. per hour.

REAL-TIME ALERTS

A notification pager alerts your team when Whiz is done - or if it needs a hand.

SAFETY AND PERFORMANCE

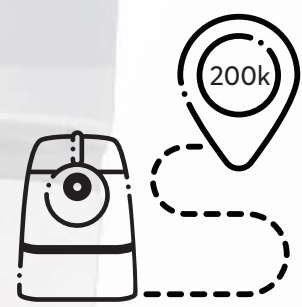
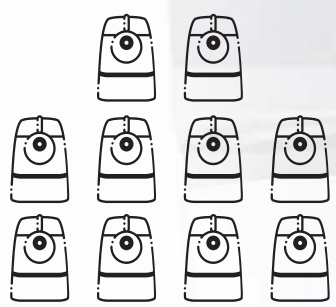
Whiz autonomously avoids people, glass walls, cliffs, and other hazards.

AUTONOMOUS AND MANUAL MODES

Let Whiz do the work, or take control when you need to.

CONFIRMED CLEAN

Whiz delivers robust cleaning performance data that can easily be shared with critical stakeholders.



>10,000
Whiz **DEPLOYED**
world-wide

>200,000
Miles
COVERED by Whiz



LEARN

Simple to Use. Simple Set-up. Teach a cleaning route and press the start button. It's that simple.

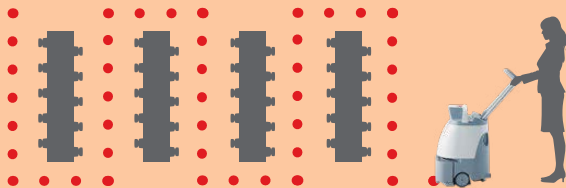
Create a route (Teaching)

1. Set the Home Location Code as the starting point.



Use the Home Location Code to define start and end points.

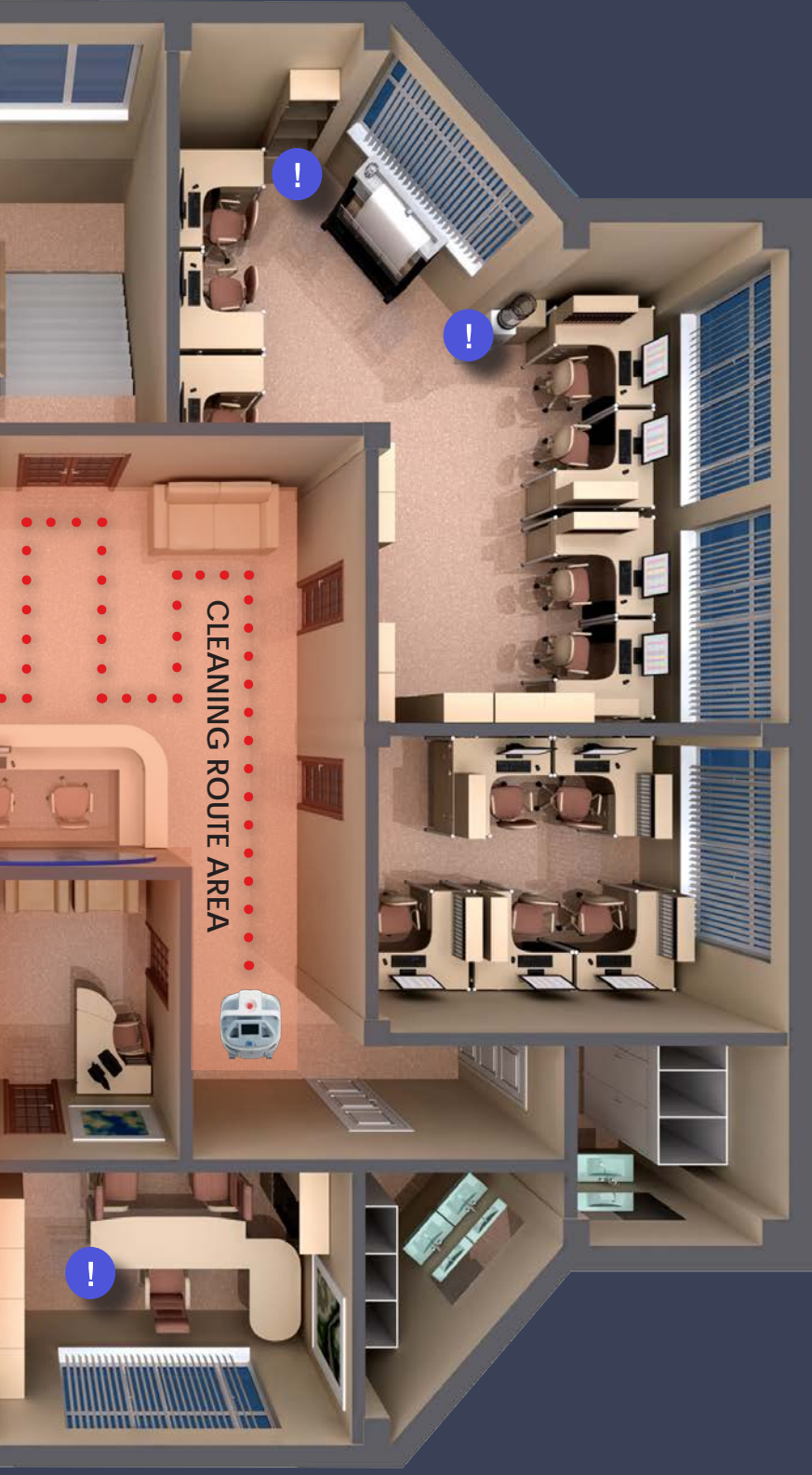
2. Manually push Whiz through the cleaning route to teach.



Moves autonomously along the cleaning path. After initial use, simply press the start button for autonomous cleaning. Capable of memorizing several routes.

User can also teach a boundary map by walking the border of a space, best used for large empty spaces (ballrooms, empty conference spaces, etc.). Whiz will then determine and fill in the border with the most efficient way to clean the space.





ADAPT

Whiz detects and avoids obstacles, responding to environmental changes.

Multiple sensors detect obstacles, stairs, and human movement. Whiz avoids objects or stops until the route clears. Whiz can access and clean narrow spaces, even along hallway wall edges.



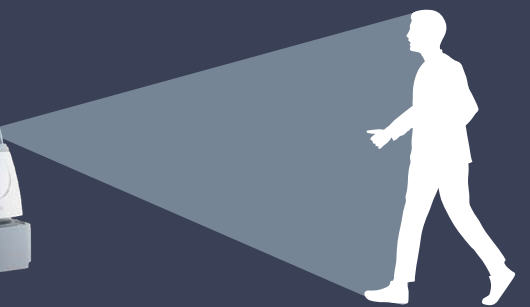
DETECTS OBSTACLE

Avoids obstacle and continues cleaning



DETECTS MOVEMENT

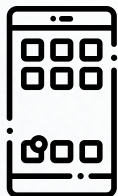
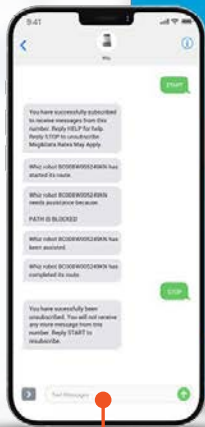
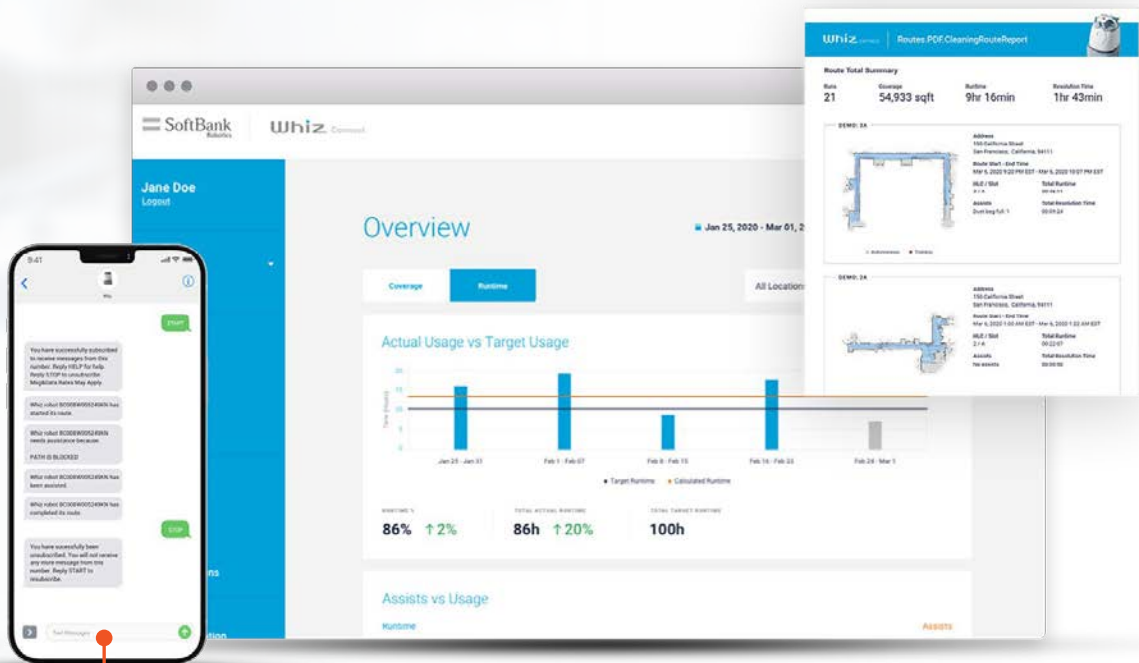
Pauses to evaluate environment and to determine best way to continue with route



TOTAL CONTROL

Whiz Connect, a cloud application integrated with Whiz, combines cleaning metrics and data-driven analytics features to help monitor and improve your environment's health and safety. Whiz is powered by BrainOS, an intelligent navigation platform.

INSIGHTS: Understand your Whiz's performance and the value you get from your robots. Use the reports to track towards business goals, manage routes and locations of your units, and receive actionable suggestions to get the most out of Whiz.

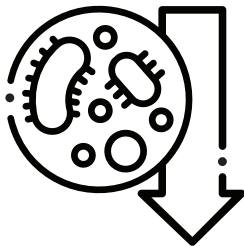


SMS TEXT NOTIFICATIONS: Stay informed of Whiz activity with SMS text support for operations managers and team leads. Receive near-time texts on your mobile device of assist notifications from specific robots to avoid delay in cleaning.

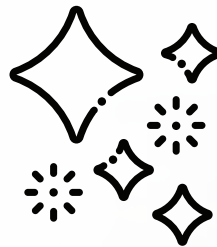
RESEARCH FINDINGS

SoftBank Robotics conducted research in Tokyo, Japan to evaluate the effectiveness of Whiz to clean office buildings. The study was conducted across **116 sites**¹.

FINDINGS

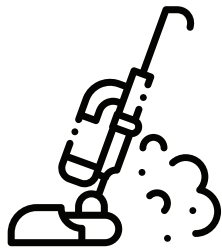


Whiz helps to **decrease airborne fungi** in indoor environments with two onboard true HEPA Filters.



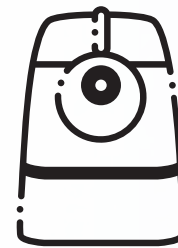
There is a **correlation** between **floor cleanliness** and **air cleanliness**.

Hence, keeping the floor clean will result in better air quality.



Manual cleaning

The concentration of airborne fungi² (n/cubic meter) was 20,000 to 30,000.



Using Whiz

The **residue** and **microorganisms** remain constant at **2,000 Relative Light Unit (RLU) to 4,000 RLU**.

Airborne fungi remained at a range of **4,000 RLU to 6,000 RLU**.

SPECIFICATIONS

ROBOTIC OPERATING SYSTEM

| | |
|-----------------|--|
| BrainOS | Autonomous navigation software |
| Safety Features | Safety sensors detect and maneuver around people, objects, and cliffs. |

HARDWARE FEATURES

| | |
|-----------------------|---|
| Size (DxWxH) | 18.6 in x 17.9 in x 25.7 in |
| Battery | Lithium ion; 23.7 Ah, 25.2V |
| Run Time | 3 hours on a single charge |
| Dust Bag Capacity | 4.0 L |
| HEPA Filtration | Yes |
| Noise Level | Normal mode 62 db |
| Consumable Parts | HEPA filters, dust bag, brush, home location code |
| Weight | Machine weight: 66 lbs / 30 kg Battery weight: 11 lbs / 5 kg |
| Cleaning Productivity | 5000 ft ² - 6000 ft ² / hour |
| Max Speed | 1.1 mph |

**Specifications and/or design details may change without prior notice.*

SUPPLIES

Includes charger, home location code, vacuum motor, and other accessories.



Paper Bag
Easy disposal; 4L max capacity



Brush
Removable rotating brush, auto height adjust



HEPA Filter
Captures 99.97% of PM2.5 particles, including pollen and house dust



Battery
Replaceable lithium ion battery

•STERLING BUSINESS SYSTEMS•
3600 Veterans Memorial Highway
Bohemia, NY 11716
(631) 750-6162 Fax (631) 750-6165
sterling-digital.com

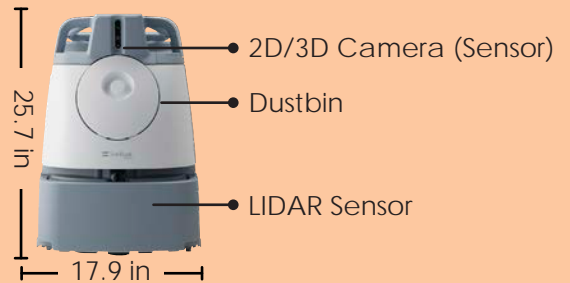
Canon
AUTHORIZED DEALER

usa.canon.com

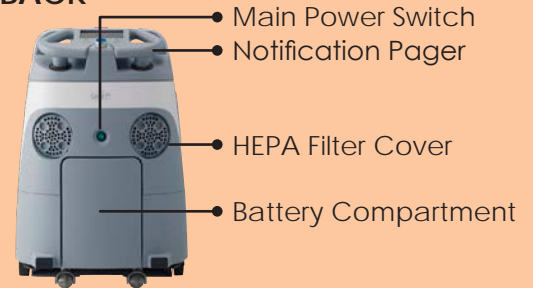
Canon is a registered trademark of Canon Inc. Softbank Robotics and Whiz are trademarks of Softbank Robotics America, Inc. All other referenced product names and marks are trademarks of their respective owners and are hereby acknowledged. © 2022 Canon Inc. All rights reserved.

PARTS/FUNCTIONS

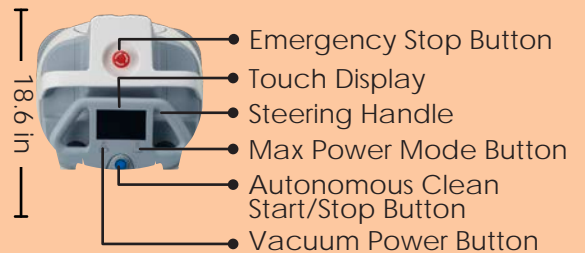
FRONT



BACK



TOP



Notification Pager
2.3in x 3.9in x .70in
(Width, Length, Height)

Home Location Code
3.15in x 3.15in

